

EMC Filters for AC Power Line

For Single-phase, Mid-size Box Cased ZAC-00U Series

Conformity to RoHS Directive

FEATURES

- The ZAC-00U series is a highly compact, large current EMC filter.
- They exhibit outstanding attenuation characteristics with respect to both differential mode and common mode noise components.
- Leakage current is maintained at less than 1mA.
- These filters are highly reliable and provide stable attenuation performance even in harsh environments, where the filters may be subjected to humidity, vibration, and shock.
- It is a product conforming to RoHS directive.

APPLICATIONS

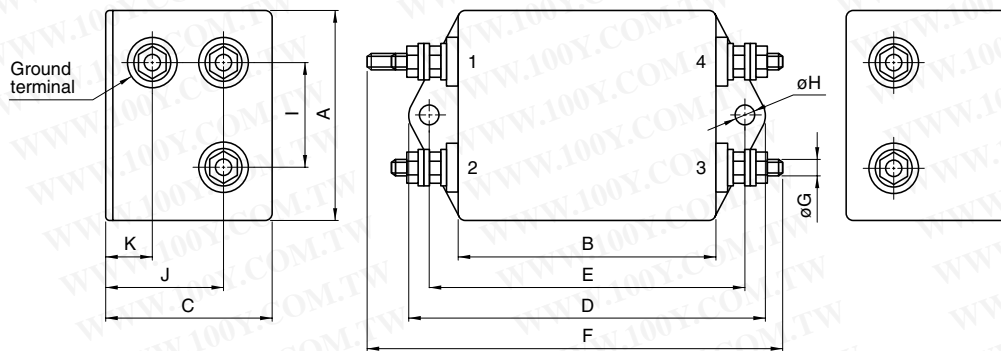
Computers and peripheral terminals, general control devices, office automation equipment, and other industrial devices.

SAFETY STANDARDS

Part No.	Standard and standard No.		
	U.S.A.	Canada	Europe
	UL	CSA	NEMKO
	UL1283	CSA C22.2 No.8	EN60939
ZAC2205-00U	E62388	LR76849C	P08209027
ZAC2210-00U	E62388	LR76849C	P08209027
ZAC2215-00U	E62388	LR76849C	P08209027
ZAC2220-00U	E62388	LR76849C	P08209027

勝特力材料 886-3-5753170
 勝特力电子(上海) 86-21-34970699
 勝特力电子(深圳) 86-755-83298787
[Http://www.100y.com.tw](http://www.100y.com.tw)

SHAPES AND DIMENSIONS



Dimensions in mm

Part No.	A	B	C	D	E	F	øG	øH	I	J	K
ZAC2205-00U, 2210-00U, 2215-00U, 2220-00U	50.8	63.5	38	85	74.7	95	M4	4.8	25.4	26.5	9.3

- Case: metal, terminal: stud

ELECTRICAL CHARACTERISTICS

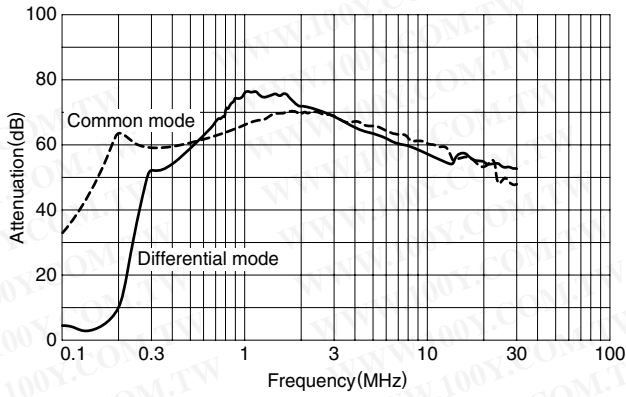
Part No.	ZAC2205-00U	ZAC2210-00U	ZAC2215-00U	ZAC2220-00U
Rated voltage Eac(V)	250	250	250	250
Rated current(A)	5	10	15	20
Test voltage Eac(V)[Between terminal and case]	1500	1500	1500	1500
Insulation resistance(MΩ)[DC. 500V, 1min/between terminal and case]	100min.	100min.	100min.	100min.
Leakage current(mA)[250V • 60Hz]	1max.	1max.	1max.	1max.
DC resistance(mΩ)	300max.	40max.	40max.	10max.
Operating temperature range(°C)[Including self-temperature rise]	-10 to +85	-10 to +85	-10 to +85	-10 to +85
With derating over(°C)	55	55	55	55
Temperature rise(°C)	30max.	30max.	30max.	30max.
Attenuation frequency range (MHz)[+5 to +35°C]	Differential mode at 40dB 0.5 to 30	0.7 to 30	1.5 to 30	1.5 to 30
	Common mode at 40dB 0.15 to 30	0.5 to 30	1.5 to 30	5 to 30
Weight(g)	250	255	275	285



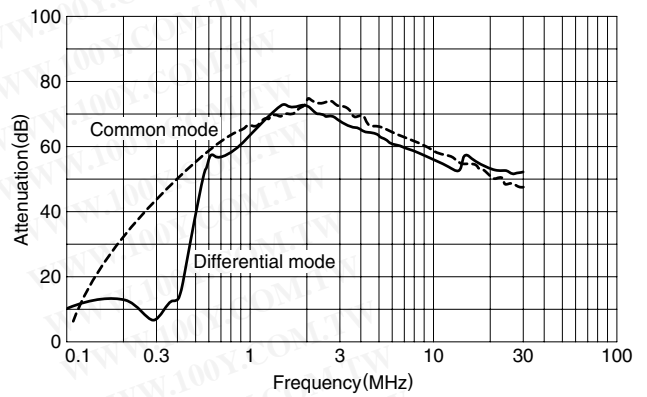
- Conformity to RoHS Directive: This means that, in conformity with EU Directive 2002/95/EC, lead, cadmium, mercury, hexavalent chromium, and specific bromine-based flame retardants, PBB and PBDE, have not been used, except for exempted applications.

- All specifications are subject to change without notice.

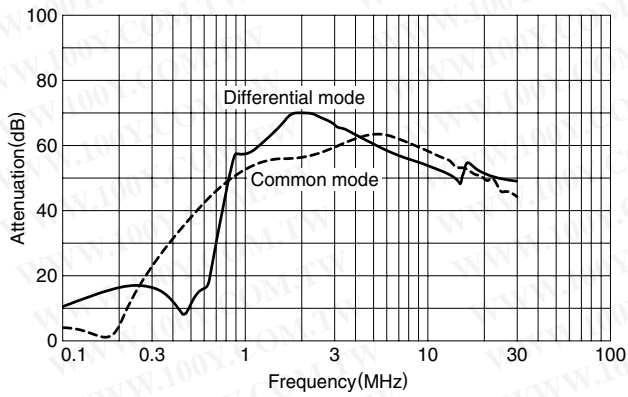
TYPICAL ELECTRICAL CHARACTERISTICS
ATTENUATION vs. FREQUENCY CHARACTERISTICS
ZAC2205-00U



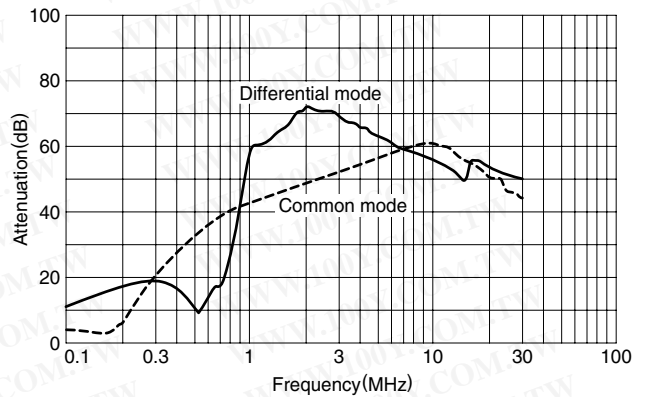
ZAC2210-00U



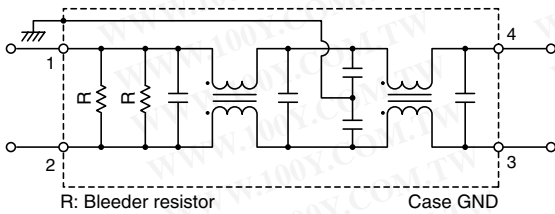
ZAC2215-00U



ZAC2220-00U



CIRCUIT DIAGRAM



• All specifications are subject to change without notice.